



Queen Margaret University  
EDINBURGH

# At Queen Margaret University, our vision is to be a university of ideas and influence.

Our mission is to foster intellectual capital with both a theoretical and practical focus, giving students and staff the confidence to make a real difference to the world around them.

We are known not only for excellent, relevant teaching, research and knowledge exchange but also for the care and respect we give our students, staff and partners. As a thriving campus university we strive to create a community without borders, helping to improve people's lives locally, nationally and internationally. We are ambitious and enterprising, and, in everything we do, we are committed to social justice.

## National Student Survey 2019

**Top**  
in Scotland and joint top in the UK for student satisfaction in **Sociology**

**Psychology & Sociology**  
**100%**  
satisfaction

**Top**  
in Scotland and joint top in the UK for student satisfaction in **Nursing**

**Public Sociology**  
**100%**  
satisfaction

**2nd**  
in Scotland for student satisfaction in **Counselling, Psychotherapy & Occupational Therapy**

**International Hospitality & Tourism Management**  
**100%**  
satisfaction

**Top Scottish 'post '92' university in the Complete University Guide 2020**  
(post '92' refers to institutions granted university title since 1992)



## Age of students

**39.2%**  
are below 21 years

**22.5%**  
are 30 years and over



## Undergraduate leavers in employment or further study

**97.1%**



**94.6%**



HE sector average



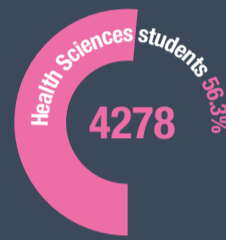
**3rd**  
in Scotland for employment of undergraduate leavers

\* Source: HESA 2018

## Student numbers (2017 - 2018: including overseas collaborations)



**7601**  
Total number of students



**2462** QMU students are studying for a QMU degree through our overseas collaborations

## QMU staff (as of December 2018)

**258**  
Academic

**224**  
Professional Services

Female  
**65%**

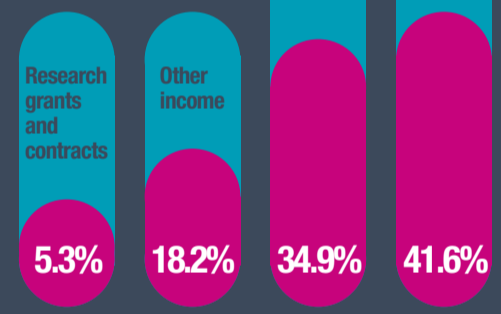
Male  
**35%**

## Income

**£37m**

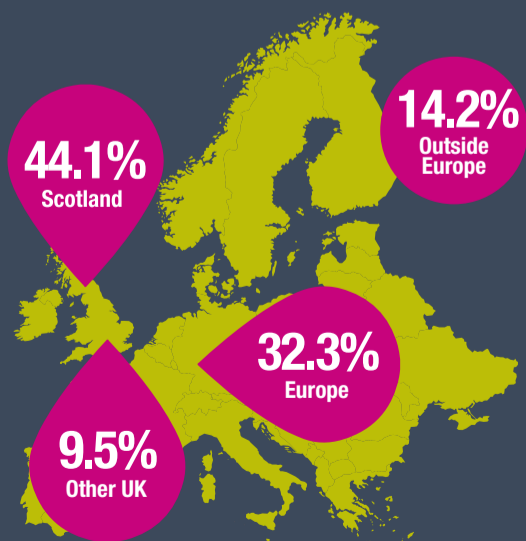


## Sources of income (2017-2018)



## Student distribution by origin (2017 - 2018)

QMU students come from **over 90** countries



**35+**  
graduate start-ups created through our Business Innovation Zone



**1st** Scottish university to host a **Business Gateway** on campus

## Research excellence\*

\* REF 2014

**92%**  
of our research in **Speech and Language** is classed as internationally excellent or world leading



**50%+**  
of our research profile in **Global Health and Development** is classed as internationally excellent or world leading



**77%+**  
of our research publications in **Media and Communications** are classed as internationally excellent or world leading



**40%+**  
of our research publications in **Allied Health** are classed as internationally excellent or world leading



**6** research centres and **3** knowledge exchange centres

## Flagships

- Health and rehabilitation
- Creativity and culture
- Sustainable business